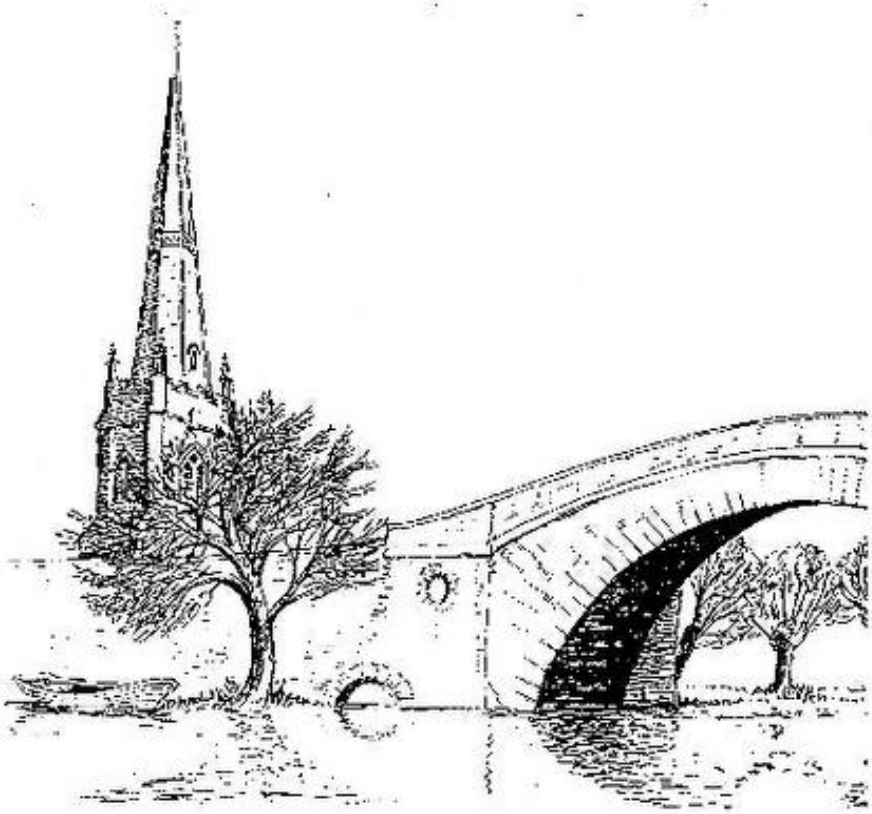


THE BRIDGE

Lechlade's Community Magazine

A Window on Lechlade



JUNE / JULY 2025

MOORE ALLEN & INNOCENT



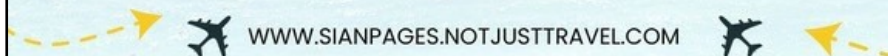
Selling or Letting, we are here to help

01367 252541
mooreallen.co.uk



Not Just Travel - Your local, Personal Travel Consultant

Travel broadens the mind and opens the door to new experiences.



Contact Us

07738050864

sian.pages@notjusttravel.com

Email Us



WELCOME**A challenging year for Lechlade**

At the Annual Town Council meeting on 12 May, we elected the Mayor, Deputy Mayor, and committee members. I'm honoured to continue as Mayor for another year and welcome Ian Lindsay as Deputy Mayor.

Looking ahead, 2025 presents several challenges for Lechlade and the Town Council. We face the dual pressures of delivering local projects while navigating the implications of national housing policy and upcoming changes in local government.

The Town Council operates with a small share (about 6%) of the total Council Tax, known as the precept. These funds support a wide range of services: maintaining play areas, fences, trees, and the cemetery; grass cutting; grants to community groups; the Memorial Hall loan; CCTV and AutoSpeedWatch cameras; and essential professional services, including planning advice. We also continue to support Lechlade Youth Club, Bloomers, and various community initiatives.

Over the past year, we've made progress on several important projects. These include upgrading the 800m path from Wharf Lane to St Johns Priory Park and advancing the Lechlade to Fairford Cycle Path with clearance, resurfacing, and design work. We installed three AutoSpeedWatch cameras and now forward weekly speeding data to police. We've also nearly completed the Traffic Road Order (TRO) to regularise parking in the Market Place and Burford Street.

Following a public consultation, the Street Furniture Upgrade project is moving ahead. This aims to enhance the town centre with new benches, planters, bins, and noticeboards. Contracts are being awarded, and installation is expected to start soon. You will see the existing planters emptied and removed but they will soon be replaced with new planters. Bloomers continues to do a brilliant job maintaining floral displays, but they urgently need more volunteers—please consider helping out.

We work closely with Gloucestershire County Council Highways, meeting regularly to discuss improvements. St John's Street is scheduled for resurfacing in late May, followed by Mill Lane. Pavement resurfacing in the Market Place and High Street will occur later this year, after the summer holidays.

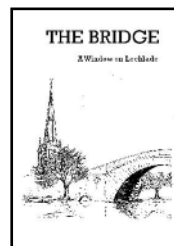
The most significant challenge ahead is the government's increased housing delivery targets. Cotswold District Council (CDC) must now double their annual housing output—from 500 to over 1,000 homes. This will require a new Local Plan, which may include new housing allocations in Lechlade. Should this happen, we would need to revise our Neighbourhood Plan. If CDC cannot demonstrate a 5-year housing land supply, our current development boundary protections could be undermined, opening the door to speculative development.

Cont'd

We remain committed to opposing unsuitable proposals, like the development at The Wern, but planning policies and government mandates may limit our options. Rest assured, residents will be consulted throughout, and we will keep everyone informed via our website and newsletters.

It will be a busy and pivotal year for Lechlade. We currently have three Town Councillor vacancies. If you are interested in shaping the future of our town, please contact me, Ginette (Town Clerk), or Ali (Deputy Clerk) to learn more.

Cllr Steve Trotter, Mayor.



THE BRIDGE MAGAZINE

Can you help?

As many of you will be aware, some of the key Bridge magazine editorial committee members will be retiring at the end of 2025. So far, we have not recruited any volunteers to step into those vacancies. Could you, or someone you know, help? It's a brilliant opportunity to make a real difference in your Lechlade community.

All the current committee members will stay in post until after the December 25/January 26 edition but then the magazine will need to fill these roles:

- Editor – responsible for content with an overarching management role.
- Design & layout manager – responsible for laying out the articles and advertisements and delivering the print edition to the printers.
- Online edition manager
- Distribution manager – responsible for delivering and topping up the print edition in the local outlets.

It is very rewarding to feel that you are making a vital contribution to your community by sharing local information and supporting all the many activities and events that make Lechlade such a vibrant place to live. Without new committee members, the magazine will close in January 2026.

If you would like to know more, please contact the Editor, Marian Winckles, by email at editor@lechladebridge.org.uk or by phone 01367 252851.

The Editor



LECHLADE HISTORY SOCIETY

Katherine Parr

At our April meeting, we learned about Henry VIII's sixth and last wife, Katherine Parr (1512–48). Mike Bottomley enlivened his talk with Tudor music and video clips of an actress at Sudeley Castle playing the part of Katherine. We discovered that her contribution to the Tudor story is largely unknown and much greater than usually thought. She was a well-educated and capable woman who was outspoken in her support for religious reform. She converted to Protestantism and survived a plot to have her arrested for heresy. Miles Coverdale, who made the first English printed translation of the bible, had much influence on Katherine. She was the first published female English author, writing religious books under her own name.

Henry was her third husband and, although she really wanted to marry Thomas Seymour (Jane's brother), she considered it God's will and her duty that she should marry Henry and become queen. Henry trusted her and recognised her abilities, making her Queen Regent when he was away fighting in France. She was influential in persuading Henry to reconcile with his daughters, Mary and Elizabeth, and restore them to the line of succession.

After Henry died, Katherine did marry Thomas Seymour (1st Baron Seymour of Sudeley). In 1548 she gave birth to a girl but fell ill and died a few days later. Coverdale took her funeral, which was the first funeral of an English king or queen to be conducted in English, and she was buried at Sudeley Castle. The baby girl, Mary, disappeared from the historical record at around 18 months old.

Sudeley fell into decline during the Civil War but was restored by the Dent family of glove-makers during the 19th century and became their family home.

Diary Dates

Monday 16 June – Guided walk around Southrop – booking required

Monday 21 July – Guided walk around WWII sites in Coleshill – booking required

To book email marian@winckles.co.uk or ring 01367 252851

Linda Kent

ST THOMAS, FAIRFORD

Mass times: 6:00pm on Saturday and 11:00am on Sunday



ST LAWRENCE PRIMARY SCHOOL, LECHLADE

This term has been very short, but once again, busy and fun.

At the start of the term the children involved in the school choir or music lessons travelled to Cheltenham to attend the Jazz Festival. They had a fantastic time listening to music with other local schools followed by a picnic in the park.

Mid way through the term, on a beautiful afternoon, the Friends of St Lawrence School (FOSLS) held a Colour Run at the Lechlade playing fields. The children had a fabulous time, running a course while the FOSLS team threw a rainbow of coloured powder over the children (and the Head, Mr Soutar!). It was a wonderful social event with families enjoying a BBQ. The fundraising efforts by FOSLS has a huge benefit to the children who attend St Lawrence School, this year donations have replaced playground equipment, bought books and helped fund class trips.

At the end of the term, after working extremely hard during their SAT exams, the Year 6 pupils headed off on their residential to the Forest of Dean for three days. The children had a fantastic time taking part in several different outdoor activities and enjoyed marshmallows over a campfire!

Gordon Soutar, Headteacher

TROUT THEATRE COMPANY

Four plays for summer

This June, we bring you... 'The Apartment!' Our title for four very different plays in an identical setting, which moves seamlessly about in time and space.

This gives a great way of grouping together four brilliant short plays by wonderful playwrights, all in one packed show.

Alan Ayckbourn's 'Countdown' lets us into the hidden thoughts of a long-married couple, to great comic effect; Georges Feydeau's 'Woored and Viewed' is a 100-mph farce; then, 'Before Breakfast' by Eugene O'Neill changes the mood significantly, before N.F. Simpson's 'Gladly Otherwise' rounds things off with some positively Pythonesque humour.

Performance dates are the 27 and 28 of June. Tickets (£15.00) will be available shortly from the Trout Inn or ticketsource.co.uk/TTC

We hope you will be able to join us for a thoroughly entertaining evening!

Andy Pritchard



SERVICES AT ST LAWRENCE CHURCH

Regular services

The pattern of worship in St Lawrence Church is as below.

On the first Sunday of the month

- 8:00am Spoken Holy Communion BCP
- 10:00am* Holy Communion (with groups for youngsters **in term time**)
- 5:00pm Choral Evensong

On the second Sunday of the month:

- 8:00am Spoken Holy Communion BCP
- 10:00am* Together@10 All Age Service
- 5:00pm Sung Holy Communion

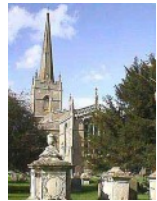
On the third and fourth Sundays of the month:

- 8:00am Spoken Holy Communion BCP
- 10:00am* Informal service (with groups for youngsters **in term time**)
- 5:00pm Choral Evensong

On the fifth Sunday of the month (when there is one):

- 8:00am Spoken Holy Communion BCP
- 10:00am* Traditional Holy Communion (with groups for youngsters **in term time**)
- 5:00pm Healing service (no choir)

*these services will be live-streamed via Facebook for joining in together and are also available there to watch later. The order of service to use if joining online is loaded onto our website each week.



Team Vicar: Rev Andrew Cinnamond 01367 253651

Churchwardens: Susan Holmes – 01367 253268, Paul Cobb 01367 253100

Assistant Churchwarden: Brian Rudge – 01367 253433

Parish Office: 01367 358653 – info@stlawrencelechlade.org.uk

Visit our website stlawrencelechlade.org.uk for more information



TOURIST BUS

Stagecoach, in association with Faringdon Town Council, is again running the Tourist Bus around the local area on Saturdays from 3 May until 27 September.

Faringdon Market Place *	10:00am	12:00noon	2:00pm
Radcot Ye Olde Swan Pub	10:06am	12:06pm	2:06pm
Kelmscott Manor Car Park	10:15am	12:15pm	2:15pm
Lechlade Market Place	10:30am	12:30pm	2:30pm
Buscot Weir Car Park	10:35am	12:35pm	2:35pm
Coleshill Carpenter's Yard Car Park	10:50am	12:50pm	2:50pm
Faringdon Market Place	11:05am	1:05pm	3:05pm

* Substitute Bus Stop for Faringdon - Coxwell Street, Royal Spice

Cost: Adults £5, Children £2:50, Seniors £2:50 (buy tickets from the driver)
Further information- stagecoachbus.com or 03452 418000



CITIZENS ADVICE – STROUD AND COTSWOLDS

Make a difference in your local community - become a volunteer with Citizens Advice

We are currently looking for **Admin & Triage Volunteers** to join our team. You must be computer literate, but we provide full training for the role.

You'll be a friendly face, greeting callers at the door of our Stroud office, Cirencester office or our Dursley outreach at the library. You will triage callers without an appointment – identifying emergencies and signposting to other agencies when appropriate.

Alongside this you will carry out a range of administrative tasks supporting our frontline advisers, like communicating with clients over telephone or email, and handling inward and outbound post.

You will also be trained, once you are familiar with the tasks above, to answer our freephone helpline to clients (this does not involve giving advice).

We ask that you can regularly volunteer 6-8 hours per week with us and can commit to a period of at least 6 months.

To find out more and apply, visit: <https://www.citizensadvice-stroudandcotswold.org.uk/volunteering/> Or email us at: info@ca-scd.org.uk

Elizabeth Hall

LECHLADE BAPTIST CHURCH (Sherborne Street, Lechlade, GL7 3AH)



Services and other events:

Sundays at 10:30am: Worship service

Wednesdays at 10:30am: Bible study meetings

Saturdays from 10:00am until 12:00noon: Beans drop-in café – with tea, coffee, hot chocolate and cake

For further information, please don't hesitate to drop in at Beans on a Saturday – or contact the Church Secretary, Mr David Hopkins, on 01285 712586.

On Thursdays you'll also find a Talking Café at the church premises from 10:30am. This is hosted by the Working 4 Wellbeing charity. To check the session dates, please contact the organiser, Mary Ann Dibbs, on 07555 738138.

News and views: Hope Explored

We offered this short course on three Thursday afternoons at the end of March and beginning of April. Each session started with a light lunch, followed by discussions in small groups after video presentations by Rico Tice and brief studies on the theme of Christian Hope. By reflecting on the life, death and resurrection of Jesus, as presented in the Gospel of Luke, we had an opportunity to discover how he fulfils our longing for hope, peace, and purpose.

We plan to hold further courses from next autumn, beginning with Life Explored. More details will be circulated in September. All sessions are free and last about an hour and a half.

FAIRFORD FESTIVAL

Fairford Festival starts on **Tuesday 3 June** with a bat walk! Then on **Thursday 5 June**, there's a wine & cheese tasting evening and open-air cinema.

Friday 6 June is TGI Friday with live music and food from 7:00pm-11:00pm. Then the full programme of events is over **Saturday 7 and Sunday 8 June**, including not just a Tug of War (entitled Tug of Love to fit in with the 'Love' theme of the Festival this year), but loads of other stuff. Events over the weekend include a parade, a Gladiator Performance, an author book signing, live music, 3K & 10K Road Race, Dog Show, quiz and much, much more in the grounds of Fairford Cricket Club.

Meanwhile, in the Community Centre there's a photograph display from Fairford History Society and an exhibition of art from Fairford Art Society.

Chris Roberts MBE



LECHLADE COMMUNITY LIBRARY

It's been a challenging time at the library. Recently, we discovered a leak on the incoming water main in the back kitchen area. The only external stopcock was a shared one outside the old police house. This, of course, also feeds the new toilets in the New Inn. Nick, owner of the New Inn, was very supportive in switching off this stopcock whenever possible. This helped greatly in the amount of mopping up necessary.

With the help of contractors, we located and excavated the external pipe. While removing the internal concrete where the pipe came in, the gas main was found alongside the water pipe and only 7.5cm down. This should be a minimum of 45cm. The release of the concrete caused a rupture in the pipe. Wales and West Utilities attended and, after a short period, determined too much gas was escaping and closed the Market Place. Sorry for the disruption that followed.

We are pleased to report the new water main, together with a new external stopcock in our courtyard and new gas main, have now been installed. We managed to keep the library fully open for all but two days. Many thanks to our volunteers for continuing to work on the days when we had no water or heating and much disruption.

New events happening in the library.

Mah Jong Club on the first and third Wednesday (4:00 to 6:00pm) is popular.

Craft Club on the second Tuesday of every month (10:30am-12:30pm) is growing with room for more attendees. Do pop in!

Book Club is now held on the fourth Wednesday of every month at 5:30pm. Come and join us.

By the time you read this, we will have had two **Author Events**. New local author, Emma Bloor will have been in the library for a book signing of her new psychological thriller 'Turned'. The library does have two copies of the book if you are interested.

Also, children's author B Ware will have visited to showcase her new book 'Warning, may contain dragons'. We have a copy of the book in the library for children to borrow.

We will continue to hold more of these author events. We value your support in making these successful and encouraging our many talented young authors.

Some of these above events are held in our new trial extra opening session on Wednesday evenings. Football has been low to date, but we hope to see this increase in the next few months as everyone becomes aware that we are open, particularly those in the community who normally work during the day. This could be your opportunity to come and revive the habit of borrowing books. With all the stress today, escaping with a good book is great therapy.

Volunteers

Our library is volunteer run and we are keen to recruit new people. Pop into the library to find out more.

Upcoming event - The Children's Reading Challenge

We will be running this very popular event again this summer, starting in mid-July. Look out for details.

We hope to welcome you to the library soon.

John Watkins Chair of Directors



FIX MY STREET

Spotted a pothole, fly-tipping, broken paving slab, or another issue in our community?

Fix My Street can help get it sorted! These issues not only create safety hazards but can make our lovely town feel neglected. The good news? Reporting them has never been easier, thank to Fix My Street!

How It Works

It's really easy! When you notice a problem in the local area:

1. **Visit** fixmystreet.gloucestershire.gov.uk
2. **Pinpoint** to the exact spot on the interactive map
3. **Describe** the issue (including photos, where appropriate)

You can do this on your mobile or computer - whichever is more convenient for you! The process only takes a few minutes.

Once submitted, your report is automatically sent to the relevant team - so you don't have to worry about finding the right contact or form to fill out. You'll even receive updates allowing you to track progress.

By using Fix My Street, you're helping to keep our town safe and well-maintained. Your reports also contribute to better planning and allocation of repair funding, ensuring resources go where they're needed most.

Visit fixmystreet.gloucestershire.gov.uk today to report an issue or learn more!

For Urgent Issues

If you come across an emergency, such as a fallen tree blocking a road or a gas leak, please call the emergency number **08000 514 514** straight away.

The Editor



KELMSCOTT MANOR

Summer of Creativity

Enjoy a unique summer of creativity at Kelmscott Manor. Oxfordshire Award-winning poet Robert Seater and acclaimed visual artist Jessica Palmer will bring the fascinating stories and compelling atmosphere of Kelmscott Manor to life as part of the Manor's programme of learning and public engagement, alongside an inspirational new exhibition on 'William Morris and the Book' (5 June – 25 October).

In mid-June, Jessica will create a large 3-D model of the Manor (unveiling date 14 June) out of recycled materials, enabling visitors – and especially families and children – to experience the house up close and personal. Visitors will also discover her new paper cut, an homage to May Morris's embroidered cot cover, The Homestead and the Forest, poignantly made for the child she never had.

Inside the Manor, visitors will be led on a special audio trail of 10 short poems by Robert Seater directly inspired by spaces and objects in the house.

A wider collection of poems will be published in 'The House of Words', (poems by Robert Seater and illustrations by Jessica Palmer) (launch date 13 June) exploring Kelmscott Manor in its many different guises, as a house of expectation and creativity, as well as a house of love and desire.

For visitors who would like to explore their own creative talents, there's an opportunity to attend two master classes. 'Writing Kelmscott – creating your own house of words' with Robert Seater, Tuesday 24 June, will be a stimulating workshop of writing activities and storytelling. The second workshop, 'Creative Kelmscott – making paper cut designs inspired by William Morris's art and garden' with Jessica Palmer, Tuesday 1 July, will offer a hands-on workshop in paper cutting and design.



The summer of creativity will round off with a Community Poem for Kelmscott Manor, inspired by visitors' comments and visuals, and curated jointly by Robert and Jessica, to be unveiled on Saturday 4 October 2025.

Kelmscott Manor is open to the public from 3 April - 25 October. Opening times: Thursday, Friday and Saturday – 10:30am to 5:00pm, last

entry to Manor house 4:00pm. Pre-booking online is advisable, bookings are now being taken. A ticket is required for the house, entry to the grounds is free. Facilities: Toilets, Licensed Tearoom, Gift Shop, Learning Barn with family activities Accessibility: The Manor house has step free access to the ground floor rooms only; all other buildings have step free access. Accessible toilet available. Kelmscott Manor, Kelmscott, Lechlade, GL7 3HJ 01367 252486 | admin@kelmscottmanor.org.uk | kelmscottmanor.org.uk

Amanda Stinton



PROBUS CLUB

The Probud Club of Lechlade and District continues to flourish, with a very good number of members being maintained, despite our advancing years.

Our Probud Club is open to all males up to any age and we will always welcome anyone who might wish to come and “have a look” in order to see if it might suit him. We meet in the Lechlade Memorial Hall on the first and third Fridays of every month (except for Public Holidays) at 10:00 for 10:30am; coffee is available before the talk. Talks generally last for up to an hour and the meeting is followed by a few drinks at the Bar run by our own members.

The Programme for June and July is as follows:

Friday 6 June ‘Life in the Ambulance Service’ by Nick Brown.

Friday 20 June President’s Day in St Mary’s Church, Fairford. (Please see below).

Friday 4 July ‘What does it Mean to be Safe’ by Brian Rudge.

Friday 18 July ‘Makedo & Bodgeit: Tractor Restoration’ by Alan Ward.

President’s Day on 20 June: The President, Dr Michael Colley, has arranged for Mr Stephen Aiano to give us a guided tour of the Medieval Stained Glass Windows of St Mary’s Church in Fairford. This visit will be followed by Lunch at Colosseo Restaurant in Fairford. After lunch, there will be a further visit to All Saints’ Church in Down Ampney where there is a Memorial to Ralph Vaughan Williams; we will also have the opportunity to see the Arnhem Memorial Windows there.

Dacre Watson



NEWS FROM ST. LAWRENCE CHURCH

Once again, it's been an eventful time at our parish church.

At the start of May, we were pleased to welcome back our Vicar, Rev. Andrew Cinnamond, from a well-earned sabbatical. Andrew has been resting, reflecting, and studying, and it's been good to see him back amongst us, refreshed and ready to lead our services again through an important year to come, as (God willing) building work commences for Project Inspire this summer. As we prepare for this, through the early summer months many of our services will be focused around what it means to be a genuine church – look out for details online (our website and Facebook page) or just come along to find out more.

Also, at the start of May, we had our regular Youth Weekend away. Eighteen youngsters from Lechlade and nearby went to Adventure+ in Clanfield for a weekend of activities (rock climbing and archery tag), games, silly quizzes, and toasting marshmallows on the camp fire. We also had time to think about more serious stuff, including what gives a person worth. The world we live in has all sorts of ideas about what makes a person worthy, or worthwhile, or worth caring for, and it's often hard for young people (and not so young people) to have a sense of worth that is neither arrogant nor despairing. The Christian claim is that every person has worth, regardless of their skills, looks, wealth, achievements, or popularity, because they are made by God, in his image, and loved by him at great cost. In a world of disposable relationships, and disposable people, this is as urgent and essential a message for all of us as ever.

May, once again, is the time for our Annual Parochial Church Meeting, when we report and reflect on the year just gone and look ahead at the year to come. We have so much to be thankful for, and much to be excited about as people continue to be drawn to explore faith for themselves and persevere in it through tough times. One highlight of the year to come will be our Holiday Bible Club, this year with a nautical theme, and centred around Jonah. Look out for details coming soon!

This will be the last time I write for the Bridge, as my curacy comes to an end in May and I will be moving north, to become priest-in-charge at Moreton-in-Marsh. You'll still see us around until the summer, when we will move, but let me take this opportunity to thank you for the warm welcome we have been given by everyone in Lechlade during our four years here. It's been a joy to be part of this community, and we will miss living here very much. Lechlade is a special place, and it's been a privilege to be part of such a living, loving church at the heart of it.

Rev. Gareth Griffith



LECHLADE MEMORIAL HALL AND PAVILION

The **Pavilion meeting room** is now available for hire. New carpet tiles have been fitted to provide a more welcoming space for small meetings or for use as a drop in office space. The hire charges are £10 per hour or £25 per session. Normal session times are 8:00am – 1:00pm, 1:00 – 6:00pm and 6:00pm – midnight. We are very keen for this room to provide benefit to the local community so if you can think of any other use which could be made of this room, please get in touch (see details below).

We now have a smoking shelter in the outdoor area of the Memorial Hall. Smokers should use this facility and we want to actively discourage people from smoking outside the front of the building.

On 9 May, we were delighted to host a Colour Run fundraising event on the playing field organised by the Friends of St Lawrence School. With great weather, it was definitely a case of putting the “fun” into fundraising.

On the subject of fun, we have a new activity in the Memorial Hall on Friday mornings during term time. “Create Make Do” is a pre-school art class with paint, clay, crafts, mess and lots of fun. Please contact Maja on 07739 092775 or majabeattie@gmail.com

In May we received a “Making a difference” award of £250 from Nisa (Lechlade Service Station). We are very grateful for this donation. This money has been put to good use, helping us to purchase a new bench for the Memorial Hall outdoor area. We hope users of the hall will enjoy spending some time outdoors and making use of this new bench.

We would love to have a wider age range of people who serve as Trustees. If you want to find out more about what serving as a Trustee entails, please get in touch. I would say that the main criterion for becoming a Trustee of the CIO is that you love being part of the community in Lechlade.

NHS Blood donor sessions are taking place in the Memorial Hall on the following Fridays in 2025; 8 August, 26 September and 28 November. Appointments are available between 12:50 – 7:00pm. To book an appointment, visit blood.co.uk, download the app NHSGIVE BLOOD app or phone 0300 123 23 23.

We are always delighted to host family events/parties. With the Pavilion, Memorial Hall main room and Memorial Hall social room there are a range of options available. To arrange a viewing or for more information about any of the activities which take place in the Memorial Hall and Pavilion, please go to our website which is at www.lechladememorialhall.co.uk or on Facebook at www.facebook.com/lechladememorialhall. Claire, our bookings clerk can be contacted on 07788 809784 or via email at bookonlinelechlade@gmail.com

Simon Paul BEM

Chairman of Trustees, Lechlade Village Hall and Recreation CIO



BROUGHTON POGGS BUSINESS PARK

SELF-STORAGE FACILITY

COTSWOLD SECURE STORAGE

COTSWOLD CAR STORAGE

www.broughton-poggs.com

01367 218 991



PEST WIZARDS
YOUR LOCAL PEST CONTROL SERVICE

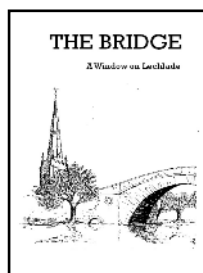
WASPS & ALL INSECTS
RATS, MICE, MOLES & SQUIRRELS
PROOFING WORK UNDERTAKEN
PROMPT SERVICE
MARK DEARLOVE • 07446377816
(01367) 703444 • info@pestwizards.co.uk

TO ADVERTISE IN 'THE BRIDGE'

This size advert would cost £42 p.a.

For information please email
adverts@lechladebridge.org.uk

(Rates are for 1 year - Six issues)



The Care Net

Quality Home Care Services
Delivered with Passion & Enthusiasm



Reliable **Hourly** and **Live-in** Care Services Available in Your Area!

- We provide personalised home care services to people in the community on an **hourly** or **live-in** basis.
- Our management team have over 16 years of experience in care with qualifications and specialist trainings such as Dementia Care.

Our **Hourly Care** Services cover Gloucestershire, Wiltshire, Oxfordshire & surrounding areas including the Cotswolds!

Our **Live-in Care** Services are available across England including most Southern England & Midlands counties!

Talk to us for a friendly informal chat: **01367 705 081**

Head Office: 5 High Street, Lechlade-on-Thames, Gloucestershire, GL7 3AD

www.thecarenet.co.uk

Follow us: @The_Care_Net The Care Net



Yoga with Silva in Lechlade-on-Thames

Yoga is an excellent way to improve flexibility, strength and assist with relaxation.

For details, please have a look at my website
www.yogasilva.co.uk

or contact me on 07899 845417 /
silva.cooper@yogasilva.co.uk

TANGLES HAIR STUDIO
LADIES AND GENTS SALON
Concession prices Tues and Weds

Gel Bottle
Manicure and Pedicures

Tues to Sat
5 Burford Street
Lechlade, GL7 3AP
Tel. 01367 252374

Shaun Guard TV AERIAL & WIFI SERVICES

- Aerials - supplied, repaired & poor reception solved
- Satellite - Sky Q dish upgrades, discreet dish installations
- WIFI - blackspots cured, internal & external data cables
- TVs - hung on your wall or set up & tuned

OXFORD AERIALS

www.oxfordaerials.co.uk shaun@oxfordaerials.co.uk

Call us on 01367 703444

ARBOREAL TREE CARE



EMAIL: ARBOREALTREES@OUTLOOK.COM

Based in Lechlade, serving the Cotswolds and surrounding areas

**Professional team of fully
qualified arborists dedicated
to providing the highest level
of arboriculture**

Free consultations for your
Tree Management requirements

OUR SERVICES:

- Tree Removal
- Canopy size reductions
- Pollarding
- Aerial inspections
- Emergency tree care

GET IN TOUCH



07778 773330



www.arborealtreecare.co.uk

Fully qualified and Insured

LOGS FOR SALE

The Cotswold Canals Trust provides a delivery service of seasoned Ash logs for wood burners and open fires

Delivery is available within a 16 mile radius of Driffield

The Trust is a charity and exists to progress the restoration of the Cotswold canals. If you support this ambition, or would just like some logs, please visit www.cotswoldcanals.org/support-us/log-sales or call 01453 752568 for details

Your support will directly help the restoration of the Thames and Severn Canal and Stroudwater Navigation



Cotswold Canals Trust

Working Safely for Restoration

Budgens

*Your Local Quality Convenience Store
Open 7 days a week 6.30am-10pm*

*Quality Fresh Local Butcher's Meat,
Quality Fresh Local Cheese's & Cooked Meat's,
Fresh Sandwiches & Baguettes, Hot Food, Costa Coffee,
Off License, National Lottery
& All Your Everyday Grocery Essentials.*

Budgens Lechlade
01367 252202
@budgenslechlade
budgenslechlade@oxringltd.com



Budgens Fairford
01285 712208
@budgensfairford
budgensfairford@oxringltd.com



AP Decorating Fairford

All aspects of interior and exterior work undertaken

Andrew Piggott
26 John Tame Close
Fairford
Glos
GL7 4NP

Tel: 07766 135638
Email: ap.decorating@outlook.com



Happy Days Home Care



Companionship and Support for the Elderly

- Help with everyday tasks like meal preparation, shopping and laundry
- Accompanying to appointments
- Taking out on social outings

Experienced with the elderly, including dementia sufferers.



Call Yvonne on **07922 103532** to find out more

ALL OUR YESTERDAYS

Lechlade's Railway

The late Brian Rushby devoted a whole chapter of his second book, 'Lechlade from the Mists of Time', to Lechlade's railway and its station. Over the next few issues, I thought we'd look at its story, starting with the construction.

In many ways its origins are typical of mid-19th century railway development, featuring conflicts of interest, financial difficulties and colourful local dignitaries and aspirations all suffused with the Victorian mania for building railways anywhere they could! The plan, named the East Gloucestershire Railway (EGR), was born around 1860 with a project to link the Great Western Railway (GWR) mainline at Faringdon via Lechlade to Cheltenham and thence on to the Midlands. Wouldn't it be great if that had been built and still existed? Parliamentary approval was granted, and a start was made at the Cheltenham end but there were financial problems and conflict between The Midlands Railway and GWR over who would run the line. So, the project was 'temporarily' abandoned.

The focus of the EGR switched to providing a line between Witney, which already had a rail link to Oxford, and Fairford with station stops along the route, including at Lechlade. Work started in 1869 in Witney and Lechlade. Lechlade station was built on a six acre site where gravel had been excavated for the construction of the station and levelling of the track. Ironically, much of the construction material was brought to Lechlade by barges on the Thames and Severn Canal; talk about being an agent of your own demise! Horses and carts were used for the final bit of the journey. The first sections of the track were laid and then a locomotive was required to aid and speed up construction.



As I mentioned in my last article, Brian Rushby could have a colourful and, maybe, imaginative approach to his local history. All the above detail rings true of early railway development but what happened next in our story I'll leave you to decide! It had been agreed that GWR would operate the new line, taking 50% of the receipts, so it fell to them to provide a loco. One arrived at Faringdon station and the construction foreman, Mr King, and a gang of men went to fetch it. The engine was steamed up and the men laid a short section of track along what is now the A417 heading towards Lechlade. The engine steamed along the track to near the end. Then the men picked up the track which was now behind the engine and relayed it in front. Apparently, it took two days to get the loco to Lechlade along the main road in this fashion. It must have looked unbelievable, especially tackling the hill out of Faringdon!

Join me in the next edition to find out how the new line fared.

With thanks to Lechlade History Society for use of their archive material.

Marian Winckles



A CELEBRANT FOR LECHLADE

Lechlade now has its very own celebrant, to help with the creation of meaningful moments for all life's events.

Andy Pritchard has recently completed training with the Fellowship of Professional Celebrants and is now able to support the local area with the planning and delivery of memorable ceremonies for funerals, weddings and the renewal of vows.

Andy is a writer by profession and also directs, produces and acts with the local Trout Theatre Company group. He is finding that all these skills are a natural fit with helping people create events that tell a story and do proper justice to all life's important milestones.

If you'd like to discuss how Andy could help you, you can email him here: andy@apcelebrancy.co.uk

Andy Pritchard



A GOOD READ

Kingmaker by Sir Graham Brady

Sir Graham Brady was elected to parliament, as Conservative MP for Altrincham and Sale West, in 1997. From 2010 to 2024 he held the influential role of Chairman of the Conservative 1922 Committee. His tenure covered five consecutive Conservative Prime Ministers: David Cameron, Theresa May, Boris Johnson, Liz Truss and Rishi Sunak. He is now free to tell his inside story.

The subtitle of the book is: 'Secrets, Lies and the Truth about Five Prime Ministers' and that is what you get, through Sir Graham Brady's eyes. I found it interesting, confirming some of my assumptions and shedding light on the smoke and mirrors that form the background to our political system. It's divided into fairly short chapters and is only 293 pages in total so very readable. The other good news is that it's available from Lechlade Community Library.

Marian Winckles

THE ARTS SOCIETY UPPER THAMES (formerly known as NADFAS)



Is pleased to invite you to one of our talks in the **Lechlade Memorial Hall**

Thursday, 12 June at 2:00pm (but please arrive a few minutes earlier)

The Art of the Japanese Garden- from Tradition to Modernity

with Professor Marie Conte Helm

This lecture introduces some of Japan's most famous gardens and provides a context for understanding the principles of Japanese garden design as it has evolved through the ages. The Japanese love of nature and the changing seasons has manifested itself in the subject matter of paintings and in the intimate and grand-scale gardens surrounding aristocratic palaces and Buddhist temples as well as Zen-inspired dry landscape gardens with their strikingly symbolic content. Nature and artifice are intriguingly combined in such examples to capture the very essence of the landscape. Historical developments and religious and philosophical influences have informed the Japanese approach to the visual arts. This lecture will also draw upon wider examples to illustrate the distinctive qualities that the Japanese have brought to garden design, an approach that has been successfully adapted to modern domestic settings and to Japanese gardens abroad.

Please pre-book by email at info@tasupperthames.org.uk and pay the exact amount of £7.50 cash on the door.

Rodney Mountford

NISA

As many of you will be aware, the garage and shop on Station Road has changed from the Co-op to Nisa. The store has been redesigned, very much with the motorist in mind. I popped in to have a look at the changes and have a chat with the staff.

The offering for those looking for lunch or refreshments has been considerably enlarged with an impressive looking coffee machine and lots of soft drinks and sandwiches. The jewel in the lunch crown is the Warren's Bakery counter. Warren's, a Cornish company, sells pastries, paninis, sweet treats and lots more. To further support passing drivers, the store now has toilets and a small motoring section.

There is still a grocery section, but it is necessarily smaller than before, together with beer & alcohol, newspapers and an Iceland range.

The staff were particularly keen to tell me about their charity fundraising. On Good Friday, they held a special day where they raised money for Longfield Hospice in Stroud, part of a county wide Nisa initiative, Lechlade Memorial Hall and the school. Among a range of activities, they offered face painting for local children. There will be other events in the future.

From the local perspective, the best news is the very competitive cost of the fuel. And you get a free Costa with every 35 litres!

The Editor



FROM OUR MP

Working Together for Our Communities

Following the recent local elections, I'd like to extend my warmest congratulations to newly re-elected county councillor, Dom Morris, who will be representing Lechlade on Gloucestershire County Council. Whether you're seeing a familiar face or welcoming someone new, local councillors play a vital role in shaping the places we call home.

From planning decisions and local transport to social care and protecting our green spaces, councillors are at the heart of so much that affects our daily lives. They're often the first port of call when something isn't working - and the people helping to get things sorted. I've seen first-hand just how hard our councillors work to support their communities, and I want to thank everyone who puts themselves forward to serve in this way.

As your MP for South Cotswolds, I believe strongly in the power of collaboration. The best outcomes result when local councillors, residents, and MPs work side by side - sharing ideas, raising concerns, and pulling in the same direction. Whether it's improving bus services, making our streets safer, supporting local businesses or tackling flooding, we get the best results when we bring together different perspectives and local knowledge.

Collaboration isn't just a nice idea - it's essential. We face big challenges as a region, from the cost of living crisis and the pressures on rural services, to the urgent need for climate action and nature recovery. But we also have so many opportunities: incredible community spirit, innovative local businesses, and people who care deeply about where they live. By working together, we can help unlock that potential and build a brighter future for everyone across the South Cotswolds.

As always, I'll continue doing everything I can in Parliament to raise local concerns and push for the resources and attention our area deserves. But the most important part of my work happens locally - in conversations at village halls, in email exchanges with residents, and in meetings with councillors and community groups.

To those who've just been elected: no matter which party you represent, I look forward to working with you for the good of our communities. And to local residents: if there's something you think I or your councillor should know about, please don't hesitate to get in touch at roz.savage.mp@parliament.uk. Together, we can work together to build strong, resilient and prosperous communities across the South Cotswolds.

Ros Savage MP



ADVENTURE PLUS

Did you know Adventure Plus is building a 4-acre Lake in Clanfield? This new adventure facility will allow us to safely support the children and young people we work with each year (upwards of 7000!) with watersports and swimming year-round! Our dedicated wetland habitats will also significantly benefit local wildlife and migrating species.

We will start the build either this summer or next, depending on funds, so if you are interested in supporting us, get in touch and arrange a visit to the site to see the master plan!

We are preparing for our summer Adventure Camps - we will offer three summer camps this year covering 8-18 years and SEND children! Summer camps are a rite of passage for young people, the chance to make new friends and grow in independence, whilst having a lot of fun outdoors! We offer climbing, bushcraft, canoeing, kayaking, SUPs, Archery, fencing, biking and more! See our website for all the dates!

Come and join us at Canoe Club- we started back 21 May – 6:30pm! Whether you are an experienced paddler or have never been in a boat before but just need the right opportunity, we would love to welcome you. Our qualified instructors will put you at ease and help you enjoy an evening on the river.

The sessions are £10 per adult or £5 (under 18) per week and there will be opportunity to pay by card when you arrive. (We prefer no cash please). Email Graham, training@adventureplus.uk for more details!

Sara Martin



LECHLADE WI

The Women's Institute (WI) was founded in 1915, to give women a voice and be a force for good in the community. Lechlade WI (founded 1947) meet on the first Tuesday of each month, 7:00 for 7:30pm, Lechlade Memorial Hall, starting with tea/coffee (no charge) to socialise before business (WI business!) and our speaker or the activity. We book a varied programme of speakers and activities. Members get a little homemade birthday posy, beautifully made with seasonal flowers from our gardens. Visitors are always very welcome and, if you are lucky, you may also get a little posy on your first visit.

Our programme isn't limited to Tuesday meetings. We also have several subgroups. More details about the groups are given at our monthly meetings.

- In May, the Foodie Group, looked at food with "Dried Fruit".
- The Book Group have just discussed Pat Barker's "The Silence of the Girls", first of a trilogy bringing the Trojan Wars to life and especially their effect on women. For June; "The Seventh Son" by Sebastian Faulks.
- The Crafting Group recently completed a wonderful ceramics course to make a "fat chicken". At our 6 May meeting, it was lovely to see all our chickens safely returned after being fired, made with weatherproof clay, we just need to find space outside for them.



In April we were entertained by the St Denys' Handbell Ringers. They not only performed for us but let us play some basic tunes using belleplates rather than their expensive Whitechapel foundry bells.



At our recent May meeting the main speaker was Dorothy Cooke, a recently retired midwife with 45 years of clinical experience, including delivering about 3,000 babies. Dorothy spoke passionately and knowledgeably about her midwifery career.

Our June meeting is a VE day celebration, this includes eating war time treats baked by our foodie group, listening to some reminiscences of Lechlade at War and a wartime singalong with the Lechlade and Kencot Ukes. We also ran a pop-up café (Saturday 17 May at Lechlade Memorial Hall) as a fund raiser for our local hospice, Prospect.

Our summer outing is a trip to Iford Manor Gardens near Bradford on Avon. Some of us are also going to look at the Air Balloon, A417 missing link road construction site for a tour and talk about the environmental impact, neolithic finds and reinstatement of the landscape.

As a campaigning organisation we have just voted locally on the 2025 National Resolution "Bystanders can be Lifesavers". For more information look at "The WI at 100 – A Century of Inspiring Women" thewi.org.uk

Upcoming programme:

Tuesday 3 June – 7:00 for 7:30pm – **VE Day Celebration Party**

Tuesday 1 July – 7:00 for 7:30pm - **Cassie Patten** – Olympic open water swimmer

Coffee Mornings – Monday 23 June & Tuesday 22 July 10:30am at The Riverside

Reading Group - Monday following the main meeting. Lechlade Baptist church. Annual book list available.

Walking Group – details available at meetings

Hilary Knight, WI Secretary 07979 645033



LITTLE LIGHTS

Sunday 1 June - Family Walk at Coleshill with a dip in the river! Led by the National Trust. No charge. Meet at Coleshill at 9:55am. Bring a picnic, paddling clothes and a picnic blanket if you have one.

Wednesday 4 June 9:30am **Pre-school group** in St Lawrence Church.

Wednesday 16 July 10:00am **Buscot walk**, playground and picnic.

Kathy Newton Branch Leader 01367 252543 kathryn8newton@gmail.com
07508 563905

Kathy Newton



Please check with organisers that even

June 2025

Sunday	1	ANTIQUES & VINTAGE MARKET Memorial Hall LITTLE LIGHTS Family Picnic 9:55am Coleshill
Tuesday	3	WI 'VE Day Celebration' Memorial Hall 7:00pm FAIRFORD FESTIVAL Starts (see article for details)
Wednesday	4	LITTLE LIGHTS St Lawrence church 9:30-11:00am LECHLADE LIBRARY Mah Jong Club 4:00-6:00pm CRAFT CLUB The Swan 7:00-9:00pm
Thursday	5	KELMSCOT MANOR 'Summer Of Creativity' Events Start (see article) MU Quiet Morning Poulton 9:45am MEN ALOUD OUT 'The Rule of Law' The Trout 7:30pm
Friday	6	PROBUS 'Life in the Ambulance Service' Memorial Hall 10:30
Saturday	7	SOUTHROP FETE 1:00-4:00pm LIONS Sponsored Bike Ride BIG GREEN DAY Faringdon Corn Exchange (+ 8th) FARINGDON TOWN TOUR Pump House LECHLADE FAMILY CEILIDH Memorial Hall 6:00pm
Sunday	8	NT Coleshill Village Open Day
Monday	9	WI Reading Group Baptist Church
Tuesday	10	LECHLADE LIBRARY Craft Club 10:30am-12:30pm
Wednesday	11	MU 'Jesus Shaped People' Memorial Hall 2:00pm GARDENING CLUB 'For the Love of Salvias' Memorial Hall 7:30pm
Thursday	12	ART SOCIETY UPPER THAMES 'The Art of the Japanese Garden' Memorial Hall 2:00pm
Saturday	14	REPAIR CAFÉ Pavilion 9:30-12:30pm
Sunday	15	FATHERS' DAY COMMUNITY CINEMA 'Paddington in Peru' (TBC) Memorial Hall 7:30pm
Monday	16	HISTORY SOCIETY Guided Walk in Southrop (booking essential)
Wednesday	18	LECHLADE LIBRARY Mah Jong Club 4:00-6:00pm
Thursday	19	MU Day Out Harnhill
Friday	20	PROBUS 'President's Day'
Sunday	22	BELL RINGING Big Lunch Recruitment Cirencester Abbey Grounds 12:00 – 6:00pm FFLC Langford Downs Open Garden 1 - 5pm
Monday	23	WI Coffee Morning Riverside 10:30am
Wednesday	25	LECHLADE LIBRARY Book Club 5:00pm
Friday	27	TROUT THEATRE COMPANY 'The Apartment'
Saturday	28	TROUT THEATRE COMPANY 'The Apartment'
Sunday	29	FFLC Eastleach House Open Garden 2 - 6pm

REGULAR M

Please check with organisers

Sunday	Community Cinema Third 7:30pm Memorial Hall
Monday	Fitsteps 3pm - 4pm Memorial Hall Lechlade Photographers Second 7:30pm Riverside pub History Society Third 7:30pm Memorial Hall Badminton weekly 8:00pm Memorial Hall
Tuesday	Tuesday Club Weekly 10:30am–3:00pm Memorial Hall Tuesday Lunch Club Weekly 12:30–2:00pm Memorial Hall TATT Second 8:00pm The Trout U3A First 2:30pm Palmer Hall, Fairford WI First 7:30pm Memorial Hall Art Society variable 2:00pm Pavilion
Wednesday	Little Lights First & Third 9:00am, St Lawrence Church Lechlade Voices Second & Fourth 7:00pm Baptist Church Mens Shed 9:30am - 12:30am Fairford



DE DIARY

ts are proceeding as advertised.



July 2025

Tuesday	1	WI 'Cassie Patten' Memorial Hall 7:00pm
Wednesday	2	LECHLADE LIBRARY Mah Jong Club 4:00-6:00pm CRAFT CLUB The Swan 7:00-9:00pm
Thursday	3	MEN ALOUD OUT 'Gender Issues' The Trout 7:30pm
Friday	4	PROBUS 'What does it mean to be safe?' Memorial Hall 10:30am
Saturday	5	FARINGDON TOWN TOUR Pump House THEATREGOERS 'By Royal appointment' Malvern
Sunday	6	ANTIQUES & VINTAGE MARKET Memorial Hall
Monday	7	WI Reading Group Baptist Church
Tuesday	8	LECHLADE LIBRARY Craft Club 10:30am-12:30pm
Wednesday	9	MU Afternoon Visit Charney Bassett Manor GARDENING CLUB Visit to Pudding Hill Garden, Bibury
Saturday	12	REPAIR CAFÉ Pavilion 9:30am-12:30pm LECHLADE LIBRARY Children's Reading Challenge starts
Sunday	13	NT Coleshill Village Open Day
Wednesday	16	LITTLE LIGHTS Buscot Picnic 10:30am RNLI 'Sea Shanty Shindig' The Trout 7:00pm LECHLADE LIBRARY Mah Jong Club 4:00-6:00pm
Friday	18	PROBUS 'Makedo & Bodgeit' Memorial Hall 10:30am ROYAL INTERNATIONAL AIR TATTOO (until Sunday 20th)
Sunday	20	COMMUNITY CINEMA Memorial Hall 7:30pm
Monday	21	HISTORY SOCIETY Guided Walk in WWII Coleshill (booking essential)
Tuesday	22	WI Coffee Morning Riverside 10:30am
Wednesday	23	LECHLADE LIBRARY Book Club 5:00pm



MEETINGS

rs before first attendance

Wednesday (cont'd)	Thames School of Dancing Weekly 7:00pm & 8:00pm Memorial Hall MU Second 2:00pm Memorial Hall Gardening Club Second 7:30pm Memorial Hall Scottish Dancing Weekly 2:30pm Memorial Hall (Term time only) Adult Ballet Weekly 9:30am & 10:45am Memorial Hall
Thursday	Spiritualist Church Weekly 7:30pm Pavilion Men Aloud Out First 7:30pm The Trout Thursday Art Group Weekly 9:15am - 12:15pm Pavilion Working4wellbeing Digital Drop In Weekly 10:00am Baptist Church Working4wellbeing Talking Cafe Weekly 10:30am Baptist Church
Friday	Probus Alternate weeks 10:30am Memorial Hall Memory Lane Singers First & Third, 11:00am Pavilion Riverfolk Second & Last 8:00pm The Trout
Saturday	Repair Cafe Second 09:30am - 12:30pm Pavilion



FLOODLIGHTING

Many people comment on the fact that it is a joy to see St Lawrence Church floodlit, especially in the dark winter months. For many years the people of Lechlade, and others, have generously helped to fund the expense by giving donations to commemorate a special event – a birthday perhaps, an anniversary, a thanksgiving; we can dedicate a date to anything really!

If you would like to contribute towards the running costs of the floodlighting and would like to commemorate a special person or event, please use the form on the church website (<https://bit.ly/LechladeLights>) or scan the QR code.

If you don't have internet access please contact the Parish Office.

The names and events are published in The Bridge and the church website on a regular basis.

The PCC has suggested that a minimum donation of £10.00 would be appropriate and if you are a taxpayer, please do consider gift-aiding your contribution. At present the web form doesn't incorporate a facility to make the payment so this is still 'manual', but there are instructions on the form. Do contact the Parish Office with any queries.

With thanks to those who have donated to St Lawrence to help with the ongoing cost of floodlighting the spire, which we are pleased to recognise by these dedications:

A full list of dedications will appear in our next edition.



BELL RINGING

Do you know a hobby that combines physical exercise, skill, art, music, physics, maths and engineering?

Have you ever wanted to learn bell ringing?

Or are you a lapsed ringer wanting to return?

Why not come to the Big Lunch at Cirencester Abbey Grounds on Sunday 22 June 12:00 noon till 6:00pm and meet friendly ringers from Cirencester and District and try your hand at handbells and a 'mini-ring'.

For more information email cirencester.branch@bellsgandb.org.uk

Hazel Bridges, Cirencester Brach Secretary & Treasurer

THE DOOR YOUTH CLUBS

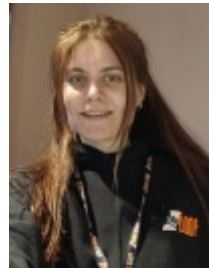
Hey! I'm Maddie, and I am the Community Youth Worker for Lechlade, Fairford and Cirencester. The Door is a local charity that has been open in Gloucestershire since 1991, working closely with young people to run youth club sessions and other events. At The Door we offer various aspects of support for vulnerable young people and their families, including mentoring, support groups and youth clubs. Youth clubs are FREE safe spaces for 11–17-year-olds to socialize, learn new skills and receive support. Youth clubs are open access, meaning young people simply turn up, no need to book.

Not only does The Door run safe spaces through youth clubs, but there are also plenty of opportunities to connect with us outside of sessions. Youth workers are in local secondary schools weekly, and enjoy meeting young people, having a chat and offering support during lunchtimes. Due to the warm weather, youth workers have found themselves outside playing badminton and other out-door games with young people, making the most of the sunshine.

At youth club we do plenty of cooking, board games and sports. As the weather has become warmer more recently, we have made fruit salads and smoothies as well as plenty of ice cream. Please let me know what you would like to do next! Get in touch @cotswolddoor (Instagram) Madison Door (Facebook). Keep an eye on social medias for updates and find out more about The Door at thedoor.org.uk.

Madison Fey

- **CIRENCESTER** – Tuesdays 3:30 – 5:30pm
St. Lawrence Church Hall (Countess Lillias Road)
- **FAIRFORD** – Mondays, 6:30 - 8:00pm
Fairford Community Centre (next to the Church)
- **LECHLADE** – Fridays 6:30 – 8:30pm The Pavilion
- **Deer Park** – Wednesday Lunchtimes
- **Kingshill** – Monday Lunchtimes



COLESHILL & BUSCOT NATIONAL TRUST

Summer Events and Open Days at the National Trust

It's Volunteer's Week from 2nd to 8th of June so starting off with a big shout out to our wonderful volunteers. The National Trust cannot do all the work it does without our generous volunteers. As ambassadors for the National Trust, they make wonderful contributions to the local community. In total, West Oxfordshire has 350 volunteers across Ashdown House, Chastleton House, White Horse Hill and the Buscot and Coleshill Estate! We have many roles across West Oxfordshire including house guides, tour guides, bookshop, site presentation, nature recovery, welcome, conservation, flower arrangers and gardeners. There are spaces in some of these roles if you would like to volunteer. There is something for everyone and your time will be greatly appreciated.

Now the bluebells have gone over, we can say that they were blooming beautiful again this year making Badbury a popular spot for visitors. Thank you to all of those who came to visit and kept to the paths. Did you know that once a bluebell has been stepped on it can take over 5 years for the plant to recover? This is why we are so protective of this delicate, protected species. It allows the display to return year after year. A huge thank you to the teams of staff and volunteers who have spent the last few weeks at Badbury welcoming hundreds of visitors to the site.

The weekend of 7 and 8 of June will be busy for us. On Saturday we will be at the Faringdon Corn Exchange for the Big Green Day event, talking about the environmental projects at the Coleshill estate. Faringdon Town Tours are back, starting at 10:30am in the Pump House, Tourist Information Centre. This year Faringdon Town Council is recruiting volunteers to deliver tours alongside National Trust volunteers. If you are interested in learning more about the town and can spare an hour a month sharing your knowledge with others, please drop into the Council Offices and let them know. Over at Coleshill there are the Secrets of Coleshill tours at 1:00 and 2:30pm. Why not come on the Faringdon Tourist Bus? It runs every Saturday, see the timetable on Page 8.

On Sunday 8 June, you will find us at Fairford Festival and at the Open Day in Coleshill. Come along to find out what's on offer in your local area. Discover new locations, walks and events and make the most of your summer with the National Trust.

July sees our usual offer of the Secrets of Coleshill tours, and the Open Day on Sunday 13th. Meanwhile, the team are gearing up for the summer holidays and the 1940s Day in September. Booking is now open. The weekend will be an immersive experience – complete with a pop-up museum and 1940s themed activities. Book in advance to save on the ticket price.

We look forward to seeing you whenever you come!

Sarah Hannis



Bluebells at Badbury



LECHLADE TENNIS CLUB

20th May sees the end of the first half term of coaching by our new coaches Excel Training Academy. This has been a great success with 26 players joining the programme already, and with very positive feedback from the players. We are now looking to put on extra sessions. The next half term session starts in early June. If you are interested in joining the sessions or would like more details on the junior or adult sessions, please visit www.exceltennisacademy.co.uk/lechladetennisclub

The Swindon and District Summer League started on 28 April. The Club has entered 2 Men's teams in Division 3 and 5 and one Ladies team in division 3. The Men's A team lost their first match, the Men's B team won their first 2 matches and the ladies drew their first match and won their second one. The weather has been dry and fine which always helps!

The Club is always looking for new members, both for social and league tennis. Social sessions are every Tuesday and Friday mornings from 9:30 - 11:00am and Thursday evenings from 6:30 – 8:30pm. These continue throughout the year.

Details about the Club are on the website www.lechladetennisclub.co.uk along with contact details for any enquiries.

Gay Oliver



LECHLADE THEATREGOERS

Our theatre visit in March was to Malvern to see 'Picture you Dead', an adaption of a DSI Grace novel by Peter James. The play was well acted overall – perhaps DSI Grace was a little unconvincing – but the plot was well handled and there were surprises along the way, together with a twist at the end prompting plenty of animated discussion afterwards!

This was much enjoyed by the group, and we were impressed by the recent improvements to the theatre entrance and welcome area.

On **Saturday 5 July** we see '**By Royal Appointment**' in Malvern. This is a funny, poignant and celebratory new play about the kind of power only a Queen can wield – she charms the world through coats and admonishes her family through a carefully chosen hat. But the Queen herself is uninterested in fashion, her look is managed by her Designer, her Milliner and her Dresser who was a working-class girl. Starring national treasure Anne Reid as The Queen and star of stage and screen Caroline Quentin as the Dresser.

We are back in Bath on **Thursday 18 September** to see a sparkling new stage adaption of Jane Austen's novel '**Emma**'. The beautiful, high-spirited Emma Woodhouse – whom Austen described as "someone who no-one other than myself will much like" – is determined that she will never marry but loves to meddle in her friends' and neighbours' relationships.

The final visit that is already booked, due to its popularity, is to The Mayflower, Southampton, to see **Mama Mia**, the musical based on the songs of Abba, which seems to be ever popular. It has been rumoured that some of our normally well-behaved members may be wanting to dance in the aisles!

Emma and Mama Mia are both sold out but if you would like to be put on a waiting list in case there are any returns you can do so.

Finally, we have booked the date for our **Annual General Meeting**, it is to be held on **Wednesday 10 September 2025**, in the Social Room, right off the main entrance, of Lechlade Memorial Hall starting at 7:30pm.

Rachel Range 01367 252056

Ellie Maughan

01367 253551

candemaughan45@gmail.com

Brian Rudge

01367 615044

brudge@sky.com

Rachel Range

CORINIUM TALKING NEWS



Brings local news to the visually impaired

For those people who are visually impaired or unable to hold a newspaper or book due to an illness or disability, the national network of charitable Talking News offers an invaluable service providing an outstanding source of local news and interesting magazine features for their registered listeners.

Volunteers from Cirencester based Corinium Talking News put together a weekly round-up of local news items, taken from the Wilts and Gloucestershire Standard, along with a monthly magazine featuring a number of items of interests for people living in Cirencester, Fairford and Lechlade or any of the villages in between. Recordings are sent out on CDs in a special envelope, delivered by free post under the Royal Mail's concession 'Articles for the Blind.' The recordings are also uploaded via the British Wireless for the Blind app for listeners to enjoy via Alexa or Google Smart Speakers.

If you know someone who could benefit from registering as a listener for this entirely free service, which provides listeners with hours of interesting entertainment, please do not hesitate to contact the Corinium Talking News. You can email them at mail@coriniumtalkingnews.org or call them on 01285 898594.

Corinium Talking News is a charity that is entirely dependent on funding from donors, grants and fundraising events. They are currently looking for a new team of Trustees and volunteers to help build the charity into an organisation for the future. If you would like to apply for the role of Chair, Treasurer, Secretary and Administrator, Sound Recorder or Reader, please contact June Little, Chair of the Cotswold Listener in Cheltenham, who is assisting with volunteer/Trustee recruitment. Contact her via email at june@cotswoldlistener.co.uk.

If you know someone who could benefit from listening to the Corinium Talking News, or if you run a care home with residents who may enjoy this free service, please get in touch either via their email or by calling 01285 898594.

Michelle Heather



SOUTHROP FETE

Southrop's beloved fete returns on Saturday 7 June, 1:00 – 4:00pm

Correct pronunciation - "Suth-er-rup"

Southrop's headline annual event has grown in popularity over the years, thanks to the hard graft residents put in to deliver the charm of a traditional fete. Having started small over a hundred years ago - when live chickens from local farms were handed out as raffle prizes and lumps of bread and treacle swung from trees – the more recent fetes have also been a brilliant day out. The setting certainly helps – with the road closed, fete-goers can amble amongst the cottages and see the classic cars and stalls. The superb Thyme hotel offers up a field for a dog show and beer tent, and bunting criss crosses the village hall, where delicious afternoon teas are served.

This year there's been a change of management. 2025's new organisers are under pressure to live up to their legendary predecessors. Be Still, who previously helped run the fete, said, "I loved it, it was so different from anything I'd ever done. There's a really good community spirit here."

Peter Brickley, one of the new event planners said: "We've been tasked with filling the shoes of a stalwart group of villagers who have now passed the baton on. They could wing it each year, as they knew exactly what they were doing. Whereas we're all a little in the dark!" Also involved this year is Jerry Hibbert from Thyme, one of the event sponsors. Jerry said "We're making good headway – we've attracted some great support, and we've added to the line up with Morris Dancing, a Stilt Walker, Circus Workshop, Antique Roadshow-style valuations and a Wipeout Inflatable."

Back by popular demand, the team are staging a Great Duck Race along the River Leach. The only problem is, no one can find the ducks. Planning meetings resound with "The ducks are missing." "We need to find the ducks!"

Coordinating the stalls, Kathryn Potter said, "For more of a country fair feel, this year we'll have a marketplace for local businesses, to involve the wider community too."

Contact & for information : southropvillagefete@gmail.com Facebook www.facebook.com/southropvillagefete
Instagram @southrop_village_events

Gretchen Shoring



LECHLADE GARDENING CLUB

On **Wednesday 11 June** our speaker will be Colin Roberts with a talk called '**For the love of Salvias**'. Colin is an experienced gardener who does know a great deal about salvias, which are gaining a lot of popularity because they do like our warmer weather. Come along and find out more about them.

On **Wednesday 9 July** there will be a local visit to **Pudding Hill Garden** in Arlington, Bibury.

Our usual meetings are held on the second Wednesday of the month at 7:30pm in the Memorial Hall, Lechlade, where there is ample parking. Membership is £5 per person per annum, after which it is £2 to attend each meeting, or £3 for Visitors, who are always most welcome. Membership also entitles you to 10% off plants at Burford and Bampton Garden Centres if plants are not already discounted. Current membership cards have to be shown at the checkouts.

For further information please contact 01367 252286 or any member of the committee.

Barbara McNaught



LECHLADE COMMUNITY MUSIC GROUPS & RNLI

Lechlade Community music groups are holding a fund raising event on **Wednesday 16 July 7:00pm** at the Trout Inn Lechlade. There will be songs and sea shanties to join in with, performed by local groups the Kencot and District Ukes, TATT band and the VoKaL singers. There will be a short talk from a RNLI representative and also a supper included in the price of the tickets. (We hope for fish finger baps and chips and scampi and chips but we need to sort out the actual menu with Penny.) There will also be a raffle.

As part of the fund raising effort, we would like to sell some knitted sea-related dolls. I have found patterns for Air Sea rescue dolls, male and female sailors and a very swarthy well-fed fisherman! For patterns contact jaymathews124@mac.com 07715 207814.

We would be very grateful if you could consider knitting some of them for this good cause. Or maybe you have other patterns for sea-related items - boats, shells, sea creatures etc? The dolls will be part of table decorations on a sea theme that Annie Cately is planning, then we will sell them at the end of the evening. I mean - who wouldn't want to take home a swarthy well-fed fisherman?

I know how busy everyone is these days, but this might be a fun project in which you might like to get involved?

With our very best wishes,

Jay Mathews and Annie Cately

LECHLADE WITH FAIRFORD MOTHERS' UNION

Christian confirm for families worldwide.

At our April meeting we welcomed our speaker, Becky Phillips from Gloucester.. She explained what 'Modern Day Slavery' and 'Domestic Abuse' are and how they affect the lives, health and wellbeing of those who survive their unfortunate treatment. Mothers' Union CARE.

Anyone affected by violence and abuse should be able to access help and support and should be taken seriously. As MU members, we should keep an eye open for something we think isn't quite right. We can encourage a connection with a local women's refuge for information, talk to groups and Churches about what's going on, offer to be a helper with others to see what can be done and above all commit to pray for those who work to stop domestic abuse.

The Clewer Initiative gives funding for the Church of England to help prevent Modern Day Slavery - forced labour, sexual exploitation, begging, domestic servitude, organ harvesting and exploitation.

Our MU branch has links with the Nelson Trust Women's refuge in Gloucester. We have donated many items to help families who are finding life difficult. We continue to pray for people who are trafficked across the world, treated as slaves and exploited. Across the world, MU community co-ordinators run courses to help prevent gender abuse.

At the May afternoon meeting, our speaker was Clare Brignall from Coln St Aldwyn's. She spoke about 'The effect of textiles on the environment'. As a Christian, Clare mixed her beliefs and knowledge of the environment as she spoke to us. She encouraged us to think about consumerism, thinking about fashion and our clothes. How ethical are our clothes? She went on to talk about waste, the use/misuse of water and the chemicals used in making our clothes. One of the alarming things was to think of dye from textiles and persistent toxic chemicals polluting our water courses, posing health risks such as hormone disruption. Clare encouraged us to look for ethically produced garments, to swap and rent clothes, check labels for organic cotton, repair clothes and use the washing machine less often.

Members chatted about shops/online retailers they use. Many members repaired clothes and did darning! At the Repair Cafe in Lechlade, on the 2nd Saturday of the month, there is a seamstress available to help repair clothes. We can all learn *Genesis 2:15 Treat the earth as if your life depends on it.*

We are collecting any old candles to be sent out to Ukraine. They will be melted down and used for the soldiers in the trenches.

Diary Dates:

Thursday 5 June 9:45am-1:00pm. St Michael and All Angels Poulton. **A deanery quiet morning/picnic** led by Revd. Andrew Cinnamon No charge and parking by the cricket field. Bring a folding chair and a picnic.

Wednesday 11 June 2:00pm Memorial Hall- Revd. Gordon Dey- **Jesus Shaped People**

Thursday 19 June 10:00am -3:00pm Harnhill.

Wednesday 9 July afternoon trip to Charney Bassett Manor with a short talk, a look around the gardens then tea.

Kathy Newton

MEN ALOUD OUT

The purpose of Men Aloud Out is simple in that the group was set up as a relaxed talking-place for men. We usually meet on the first Thursday of the month at the Trout Inn for a beer and discussion. Our topics are wide ranging, but all are considered from a Christian point of view, and lest anyone should be put off by this, you would not have to be a practicing attendee of church services and, certainly, you do not have to be knowledgeable on church matters. You would find us to be simply a bunch of ordinary guys meeting over a pint and putting the World to rights. All views are welcome, and tolerance is the watchword.

Normally, we start a meeting at 7:30pm except for our February and August meetings when we meet at 6:30pm. In February we meet either for board games or simply to chat and have a light meal. In August we again meet at 6:30pm for an Aunt Sally and a meal. On a couple of occasions, we will have a meal together and at which we have an invited speaker. On other occasions, we meet for a chat on a topical subject and one of us will suggest that subject to be chatted through to give us structure; such discussions often become very wide-ranging indeed. Why not come and give us a try; you would be very welcome.

Diary Dates

Thursday 5 June at 7:30pm when Andrew Kirk will invite discussion on “**The Rule of Law**” and its importance in a changing World.

Thursday 3 July at 7:30pm when Mark Oakley will lead the discussion on “**Gender Issues**”. Bearing in mind the recent Supreme Court rulings, this could be lively.

Advance Notice for: Wednesday 6 August at 6:30pm for an **Aunt Sally plus a meal**. A relaxing evening, a pint or two and some pleasant fun.

For more information, please contact either David Turtle on dpturtle15@gmail.com or Glenn Knight on ginnknight@gmail.com

Dacre Watson



LECHLADE LIONS

Lechlade Lions Gear Up for a Busy Summer of Fundraising and Community Support

The Lechlade Lions are set for an action-packed summer dedicated to raising vital funds and continuing their unwavering support for the local community. With two major fundraising events on the horizon, the Lions are calling on the public to get involved and make a real difference.

Kicking off their summer campaign is a **gruelling 100-mile sponsored bike ride on Saturday, 7 June**. A team of dedicated Lions and Friends of Lions will be undertaking this significant challenge to raise money for the invaluable work of **Barnardo's**. Funds raised through this ambitious endeavour will go directly to supporting vulnerable children and families. **Show your support and help them reach their fundraising goal! Visit their Just Giving page:**

<https://www.justgiving.com/campaign/lions100miler25>

Following the cycling challenge, the Lions will be hosting their highly anticipated **7th Annual Open Water Race and Challenge event** at the picturesque **Bowmoor Lake on Saturday, 3 August**. This popular event welcomes swimmers of all abilities, offering a range of distances to suit everyone. Participants can challenge themselves to swim 250m, 1km, 2km, 3km or compete in the 3km race, which annually attracts competitive swimmers from across the United Kingdom. We are delighted to welcome Cassandra Patten, Olympic swim medallist, who has kindly agreed to host this event for the fourth year in a row. **Whether you're a seasoned open water swimmer or looking for a fun and invigorating challenge, this event is for you! For full details and registration information visit:** **<https://www.lechladelions.org.uk/owls25>**

Beyond these key fundraising initiatives, the Lechlade Lions are a vital part of the local community, dedicated to making a positive impact. They support those in need, collaborate with local schools, organize various fundraising events throughout the year, manage the community minibus, and provide crucial financial support to a wide array of local charities and good causes.

Want to be part of the fun and make a real difference in your community? The Lechlade Lions are always looking for new members and Friends of Lions to join their ranks. Whether you have a lot of time to spare or just a little, your contribution can make a significant impact. Opportunities range from volunteering at events to becoming a full member and helping to shape the Lions' future activities. To find out more about joining the Lions or becoming a Friend of the Lions, and how you can get involved, please email: members@lechladelions.org.uk

STOP PRESS:

The Lechlade Lions are delighted to announce the imminent completion of the campaign to increase the availability of life-saving defibrillators in the

area. The final two defibrillators will be installed in The Wern and Perrinsfield, Lechlade, during May. This significant achievement builds upon the six other defibrillators previously organised by the Lions and other local charities in surrounding towns and villages, providing crucial access to emergency medical equipment when it's needed most.

Join the Lechlade Lions this summer and help them continue their vital work in the community!

Contact: pr@lechladelions.org.uk

Ian Thomas

SALLY-ANN'S MUSIC FOR MEMORY, LECHLADE

Andrew Crowley (one of the most diverse, recorded and high-profile trumpet players in the world) came and played the last post at Sally-Ann's Music for Memory special VE Day celebrations.

Sally-Ann's Music for Memory was started by Kelly Foreshow and welcomes those who are living with dementia and usually meet on the first Thursday of every month at St Birinus Hall, Lechlade.

Chris Roberts MBE



NATIONAL TRUST – LODGE PARK

Have you ever considered volunteering for the National Trust? For the 2025 season, we are actively seeking volunteers for Lodge Park. It is currently open 1 weekend a month, until we can build up our volunteer numbers

Volunteering for the National Trust is a great way to give back. From meeting new people to getting outside and helping look after our landscape for everyone, forever. There are several open opportunities at Lodge Park to cater to a range of interests, from gardening and grounds maintenance to outdoor guides and events volunteers. We also have a ranger position open across the wider Sherborne Estate. If you would like more information, please contact cotswolds@nationaltrust.org.uk

Jan Denton



FRIENDS OF FAIRFORD AND LECHLADE COMMUNITIES

Who are we?

Our Chairty offers a huge range of services within the local area. Please see our website or call to find out more www.friendsoffairford.org.uk or 01285 707300.

Langford Downs Open Garden - Sunday 22 June 2025

An opportunity to walk through and admire this wonderful garden. Tea and homemade cakes available. Part of the National Garden Scheme.

Entry £7 Open 1:00-5:00pm No booking required. No dogs.

Eastleach House Open Garden – Sunday 29 June 2025

Experience this stunning garden whilst gaining some inspiration. Tea and homemade cakes available.

Entry £7 Open 2:00-6:00 pm GL7 3NW

Edna Dawes Lunch Club Volunteers

If you are able to help at either a Monday or Wednesday session, or if you are able to drive the minibus, please contact Freya, 07713 607106 or email edlc@friendsoffairford.org.uk.

Drivers and Minibus Drivers Needed!

Could you help people get to their medical appointments or to our Edna Dawes Lunch Club?. Please contact Freya, 07713 607106 or edlc@friendsoffairford.org.uk or Val Harvey, 07540 798226 or transport@friendsoffairford.org.uk if you can help.

Our Nursing Team

To access our service a referral from your District Nurse or GP is required, who will then contact our team. We are able to provide care at home for up to eight weeks.

Nursing Team: Emma and Tina
nursing@friendsoffairford.org.uk 07938 244335

Bereavement Café

Our Bereavement Café runs on the first Friday of every month. Drop in between 10:00am and 12:00noon, Fairford Community Centre, Barker Room. If you have any questions, please call 07938 244335 or email admin@friendsoffairford.org.uk

Lechlade Charity Shop

Open 10-4 Tuesday – Saturday, High Street Lechlade. Linda
shop@friendsoffairford.org.uk

Join our mailing list

Stay in touch with our news and events by emailing
admin@friendsoffairford.org.uk

Val Harvey

GLOUCESTERSHIRE YOUNG PHOTOGRAPHER OF THE YEAR 2025

Southrop C of E Primary School students snapped their way to success with Cheltenham Camera Club's 'Gloucestershire Young Photographer of the Year 2025' competition. Open to all schools throughout the county and receiving over 1100 entries, the judges selected Arianne O'Neill, Year 2, as the first prize winner in the Primary School Category, with her photograph 'Ladybirds'.

Collecting her award at the Cheltenham Playhouse Theatre, presented by Mayor, Councillor Paul Baker, on 29 April, Arianne was joined by fellow students Toby Wager, Year 5, and Freya Valpeters, Year 6, both of whom were awarded commendations for their photography.

As an added achievement, all three students, accompanied by their Headteacher, Miss Megan Davies, were invited back on stage to collect a special award for 'Best Small School Entry'. Every entrant from Southrop C of E school earned a place among the top photos.

An audio-visual presentation was shown at the awards evening, in which Southrop students who had photos included in previous years, displayed a beautiful selection of images submitted to the competition. "I'm surprised, happy and grateful," said Arianne on her win. She is looking forward to spending her £70 prize money on a new camera to enter again next year.

Rachel O'Neill





LECHLADE COMMUNITY CINEMA

We show recently released films normally on the third Sunday of the month, except August and December. Our most recent film in May was 'A Complete Unknown' starring Timothée Chalamet as Bob Dylan. Our film for June is not yet confirmed but it is likely to be Paddington in Peru. Please see posters/social media nearer the time. Tickets cost £4.00, which includes a 50p voluntary donation to Lechlade Village Hall and Recreation CIO (the registered charity which is responsible for the Memorial Hall). Doors open at 7:00pm for refreshments (including wine) and the film starts at 7:30pm. Being part of an audience is a different experience from watching a film at home. So see films as they were intended to be seen, on a big screen and support your local community.

Simon Paul

THE TUESDAY CLUB

The members returned on 29 April following their Easter break. On Tuesday 6 May the 80th Anniversary of VE Day was remembered with the tables dressed in red, white and blue cloths and vases of flowers. The members shared memories from eighty years ago.

The AGM was held on the afternoon of the 6 May and attended by members, committee, trustees and volunteers.

The theme for the special summer Tuesday event will be discussed at the next committee meeting after members have been asked for their ideas.

We are always looking for volunteers particularly in the social room chatting and interacting with the members but there are also other opportunities to help in the kitchen with food preparation, making puddings, baking cakes or as a main cook if that's what you prefer doing. If you have any time on a Tuesday to help, please phone or message Jane on 07850 002521 for more information.

The Club is held every Tuesday in school term time at the Memorial Hall from 10:30am until 3:00pm. Its aim is to provide a happy and relaxing day for anyone in the community who is feeling in need of some company. Transport is available within Lechlade. The day starts with a cup of tea/coffee, chat, card games, jigsaw puzzles, dominoes and sometimes a craft activity or entertainment. A two-course meal is served at 12:30pm followed by coffee/tea and a piece of cake to take home at the end of the afternoon. The cost of the day is £8.

If you or someone you know might be interested in coming to the Tuesday Club or you would like more information about the Club, please contact Hazel on 01367 252265

Gay Oliver



LECHLADE FAMILY CEILIDH & PICNIC

LECHLADE CEILIDH BAND AND CALLER

SATURDAY JUNE 7 2025 AT 6PM
LECHLADE MEMORIAL HALL

Bring a picnic and drinks

TICKETS £5.00 (UNDER 15S FREE)

ONLINE AT WWW.STLAWRENCELECHLADE.ORG.UK

OR SCAN THE QR CODE



Info contact Jay Mathews 07715207814 jaymathews124@mac.com

Any profits to St Lawrence Project Inspire

COTSWOLD BOAT HIRE

Boating season in Buscot

We moved from The Trout Inn to Buscot Lock in lockdown and still offer boat hire on The Thames. When you book, you get emailed directions on your confirmation, if you are not sure where we are. Maybe you just don't realise we are that close, or that we moved and that we are still operational? You could even hire a boat from us and visit The Trout Inn on it! There is an orange tab on our website that shows live availability and allows you to book online.

The answers to our most common questions are:

- All our boats are self-drive and have engines.
- You do not need experience - we do a handover until you get it, and the speed limit is 4mph.
- The boats have a licence - you don't need one.
- We are now open every day until at least September.
- We do 1/2/4 hour hires and full-day hires as well as short breaks.
- You can bring your dog.
- You can bring kids of any age - we offer life jackets.
- You can bring a cool box and picnic.
- We have a disabled loo and parking and grab rails to help get in and out of boats.
- If it is pouring all day when you have booked, we contact you between 7:00 – 9:00am to try to reschedule.
- For cruisers, the lead passenger must be 21+.
- For the open-powered boats the skipper needs to be 18+ with ID.
- We don't do big groups, or hen or stag style events without very special arrangements.
- We are not open on an evening/night - the first slots start at 8:45am and the last slot of the day is 3:45/4:00pm for 1 hour.
- Fishing season starts on the 15 June - you can't fish before then. If over 12, you need an annual rod licence, but you do not need a day ticket to fish from your hire boat.



Remember - hiring a boat is fun and easy and gets you out in the fresh air! In addition, to fit in with the Tourist Bus (see Page 8) we will be offering some 11:00am-12:00noon hire slots so Lechlade people can hire a boat for a trip to Buscot.

Contact: 01793 354079 or 07947 993784 info@cotswoldboat.co.uk. Website www.cotswoldboat.co.uk

Shirley Wheeler

RECONNECT – GLOUCESTERSHIRE



Become a Stroke Mentor – Make a Difference!

Have you experienced a stroke? Can you share your lived experience with stroke survivors? Are you passionate about helping others? Do you know anyone who meets these criteria?

Share your experience, provide support and guidance, lend a compassionate ear, and help empower individuals as they rebuild their lives.

Your time and care can make a difference.

Sign up today to be a Stroke Volunteer Mentor! Get in touch – info@reconnectglos.org 01453 619620 <https://reconnectglos.org>

Irina Bell



LECHLADE ANNUAL FLOWER & PRODUCE SHOW

Saturday 6 September 2025 at Lechlade Memorial Hall

It's time to get planting, gardening, baking, crafting, wine making and snapping away with your camera so that you are ready with that prize winning exhibit in September!

Once again Lechlade Gardening Club are running their hugely successful Produce Show. There are classes to suit everyone including: home grown produce of all varieties, flower arranging, cookery, crafts and photography. There's even a couple of classes designed to channel your inner 'Bake Off' dreams!

Apart from Photography, there are no specific Children's Classes this year, but children are welcome to enter any Adult Section.

So now you know about it, don't just sit there – get yourself a Schedule (from local outlets including Lechlade Library or from the club website www.lechladegardeningclub.org.uk) and get going! There are prizes to be won and some might even have your name on them! The Schedule has details of every class and full instructions on how to enter.

The Editor

M.J DOWELL LANDSCAPING & BUILDING SERVICES EST. 1993

FRIENDLY AND RELIABLE
SERVICE INCLUDING ...

- . ALL TYPES OF DRIVEWAYS
- . PATIOS
- . FENCING
- . TURFING
- . SHED BASES
- . FOUNDATIONS & BRICKWORK
- . DRAINAGE/CONCRETING
- . ALL TYPES OF GROUNDWORKS

FREE NO OBLIGATION

QUOTATIONS

CALL 01367 243053 MOB 07767 241301

EMAIL: INFO.DOWELLANDSCAPING@GMAIL.COM



FIND US: @MJDOWELLANDSCAPINGANDBUILDINGSERVICES



ADULT BALLET

*For more information,
please contact us via:*

☎ 07833115874

✉ elevatedance@outlook.com

🌐 www.elevatedanceuk.com



**Wednesday Mornings at
Lechlade Memorial Hall
9:30am - 10:30am
(intermediate level)**

**10:45am - 11:45am
(beginners / improvers)**



BURFORD QUAKER MEETING HOUSE
5 Pytts Lane, Burford, OX18 4SJ

ROOMS AVAILABLE TO HIRE

Peaceful period premises with kitchen
and garden in quiet central location

**Looking for
a quiet space**

FOR BOOKINGS

Contact:

Nigel Braithwaite Tel. 01993 831282

Sue Ashton Tel. 01993 822114

Email: ascottmill@aol.com

IDEALLY SUITED FOR:-

Group Meetings

Art / Writing Studio

Personal Consultations

Study Circles

Musical Activities

M. J. LANE PLUMBING & HEATING

OVER 35 YEARS EXPERIENCE

FULL RANGE OF SERVICES

BATHROOMS DESIGNED & FITTED TO HIGH SPEC

UNDERFLOOR/CENTRAL HEATING

BOILER INSTALLATION & SERVICING

EXPERT DESIGN AND CONSULTATION

GAS SAFE & OFTEC REGISTERED

Email: mjlane.pandh@gmail.com

Mobile: 07770 593172



CUTLER & CASHIN

FAMILY BUTCHERS & GREENGROCERS

Traditional Quality Meat

Delicatessen with Home Made Pies

OPEN 6 DAYS A WEEK

Tel. 01367 252451

www.cutlerandcashin.co.uk

TERESA UDELL
MBACP DIP COUNS.

TRAUMA COUNSELLOR

Support with anxiety, depression, life transitions, domestic abuse, family difficulties and other issues.

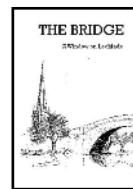
Call 0773 309 3765
email teresaudell@icloud.com



MOSSINATOR®
ROOF CLEANING SYSTEMS

Moss Removal & Roof Cleaning
Patio & Driveway Cleaning
Render & Brickwork Cleaning
Solar Panel & Skylight Cleaning
Installation of Bird Protection
Chimney Cowl Fitting

Enhance the appearance of your property with our quality assured friendly service •
info@mossinator.co.uk - 01865 362797



**Please mention
The Bridge when
responding to an
advert.**



HOLMES ARCHITECTS

**RIBA Chartered Architects
Lechlade**

**www.holmesarchitects.co.uk
info@holmesarchitects.co.uk
07846007319**

The Bridge

**An opportunity to support your
community!
See the details on Page 4**

CROUCH FARM LIVERY

HIGHWORTH

**BHS Approved
Part & DIY Livery
40 x 20 Floodlit Manège
Claydon 5 Horse Walker
Good Hacking on Farm and Bridleways.**

**01793 762489 – 07774 965268
www.crouchfarm.co.uk**

**HAY, STRAW & HAYLAGE
available in small, large square
and round bales.**

**Supplying Wilts, Glos & Oxon
Delivery Available
Call Adam on 07887 942118**



PEOPLE FOR YOU
VOLUNTEER BEFRIENDING
SERVICE

TETBURY - FAIRFORD - LECHLADE

Are you looking for a fulfilling way to give back to your community? Consider becoming a volunteer befriender with People For You!

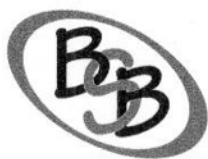
Just one hour a week of your time can make a world of difference to someone who is feeling lonely or socially isolated in your community.

If you're interested please call 07810 630167
To learn more about us, visit our website or check out our social media pages

<https://www.peopleforyou.co.uk>
<https://www.facebook.com/peopleforyoucotsword>

Registered CIO Charity 1196817





BURNETT STEVENS BUILD LTD

Willow Tree House
16 Victory Villa
Hatherop Road
Fairford
Glos
GL7 4JU

BUILDING CONTRACTORS

Fully Insured & Qualified Tradesmen

Project Management

Extensions & Conservatories
Demolition & Alterations
Structural Steel and Glulam beams
Carpentry
Patios & Landscaping
Roofing & Lead work
Chimney work
Dormers
Velux Windows

Complete Kitchen and Design
Plumbing work by qualified Tradesmen
Electrical work by qualified Tradesmen
Flooring
Plastering
Painting & Decorating
Wall and floor tiling
Upvc windows, doors, fascia, soffit and guttering

James Tel: 01285 713007
Mobile: 07814963148

Email: BSBLtd2010@aol.com

Facebook: Burnett Stevens Build Ltd

Phil Tel: 01285 712556
Mobile: 07765777871

COTSWOLD BOAT HIRE



Office: 01793 354079
Mobile: 07947 993784
Email: info@cotswoldboat.co.uk
WEB: www.cotswoldboat.co.uk

Small electric powered boats and cruisers
For 2-4 hours.

Larger electric and motor cruisers for
Full day hire, holidays and short breaks.

Book online or give us a call then collect your craft from
Buscot, Brandy Island SN7 8DA

No experience needed, we give you
instruction before you depart.

For Boat Hire information visit our website,
book online, phone us or drop us an email.

For Boat Sales, Moorings, Marine
Services and Winter Storage contact the
office.



TO ADVERTISE IN 'THE BRIDGE'

For information please email
adverts@lechladebridge.org.uk

Rates are for 1 year - Six issues: -

Half page: £72

Quarter page: £42

Eighth page: £24

THE BRIDGE

A Window on Lechlade



EDITORIAL COMMITTEE

Editor: Marian Winckles

Tel: (01367) 252851

Assistant Editor: Shan Garnell

Design and Printing: Simon Winckles

Distribution: Alan Garnell

Treasurer: Richard Lewis

Committee Members: Pam Chadwick
Kristen Sousa
Ros Godden
Lynne Glover

Key Dates for next issue:

Copy Date: Wednesday 16 July

Online Availability Date: Wednesday 23 July

Production Date: Friday 25 July.

Please email items to: items@lechladebridge.org.uk

Please email adverts to: adverts@lechladebridge.org.uk

Please email diary entries to: diary@lechladebridge.org.uk

To be added to the new issue email notification list, email:
issues@lechladebridge.org.uk

Please ensure items and adverts are in either Word or RTF format with minimal text formatting.

To contact the editor, email: editor@lechladebridge.org.uk

To contact the treasurer, email treasurer@lechladebridge.org.uk

Hard copy or handwritten submissions may be left in the Library marked **THE BRIDGE for Attn: Marian Winckles**. Please mark all such contributions clearly.

All information in The Bridge is published in good faith and is based on that supplied to us.

PAPER COPIES

These can be purchased in the Library, Post Office, Friends of Fairford & Lechlade Communities Charity Shop, The Health Box, The Trout, Tangles, Miller & Holland, The Cat's Pyjamas and Cutler & Cashin - price £1

craft

CLUB at the PUB

**A NEW monthly Craft Club
at The Swan, Lechlade!**

First Wednesday of every month
7pm to 9pm - FREE



Bring along a craft
project and chat.



12TH JUNE
OR
21ST AUGUST

SEAGLASS &
SILVERWARE



Saturday 28th June

Book Now For:

Mosaic Making
Printmaking on Fabric
Learn to Crochet

Find out more

www.jollysuperthings.co.uk

Hi, we're Toco Digital!

If you are looking for a small and friendly Agency to help you with the creation of a new Website, management and or optimisation of An existing website, or using social media (Facebook, Twitter and Instagram) to promote Your business we're here to help.

To learn more please give us a call on
07872 549412

tocodigital
better by design

